



HCA Tech Note 100

Controlling programs with Alexa (updated 3-Jan-17)

To start a program, you can say to Alexa:

Alexa, turn on <program name>

or

Alexa, turn off <program name>

In both cases the program is started. In the first case, it is started by an ON trigger and the second case by an OFF trigger. Within the program you can test for the string trigger using the Test element.

You can also use the Alexa Dim and Brighten actions with programs like this:

Alexa, increase <program name> by <percent>

Alexa, decrease <program name> by <percent>

Alexa, dim <program name>

Alexa, brighten <program name>

Alexa, set <program name> to <percent>

The program is started and arguments made available to the program with the action and percent from the phrase. These values can be tested in the program to perform different actions based upon that test.

To use this support, first enable parameters in the program. This is done on the “Advanced tab”.

Parameterized Program

This program supports parameters

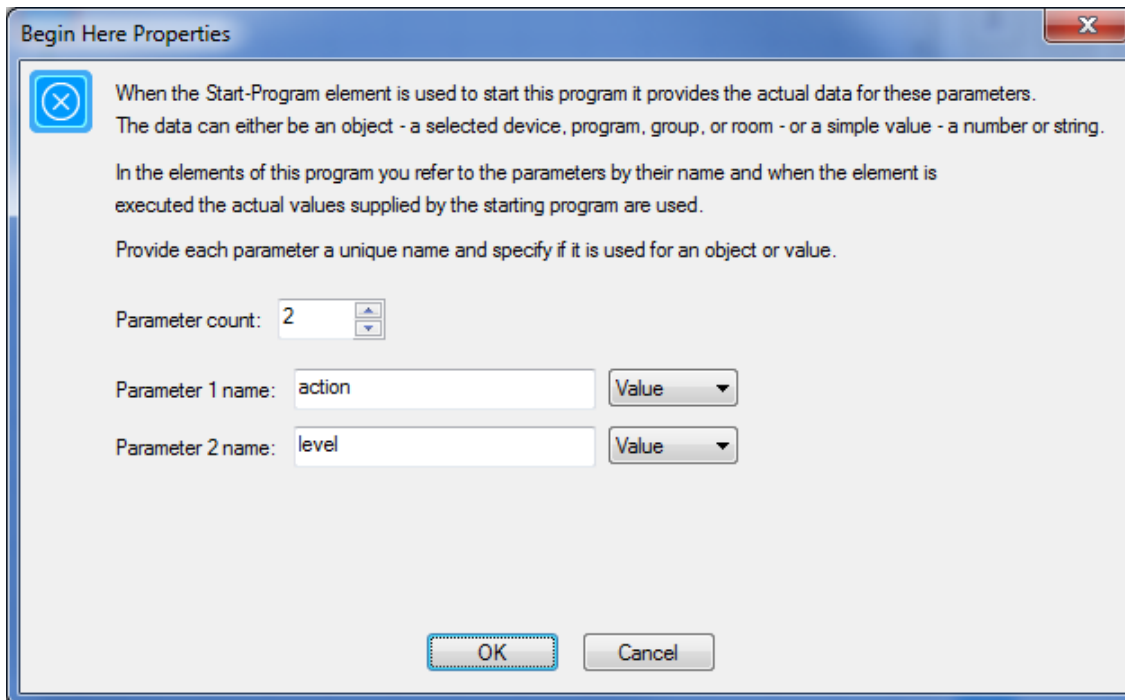
Parameters are defined in the Begin-Here element. When started from another program using Start-Program, the actual objects are selected to use when elements of this program operate upon one of its parameters.

This allows you to have sections of your design defined by programs that are used to implement complex actions on different objects without duplicating the program elements.

Next, in the program itself open the properties of the Start-Here element and define two parameters. The names are up to you but they must be value parameters.



HCA Tech Note 100



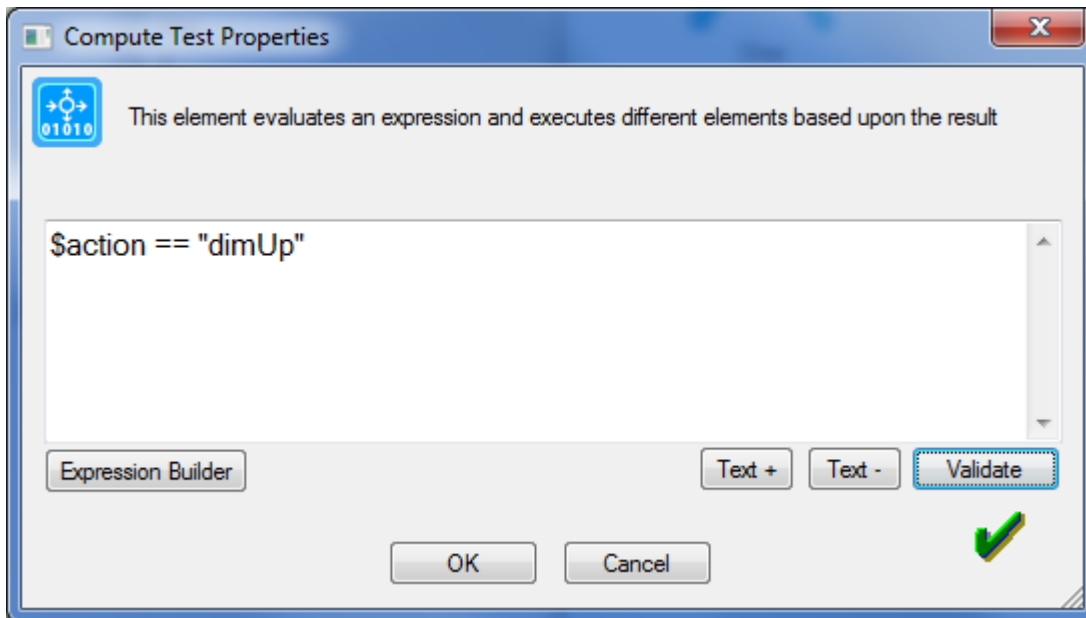
When the program is run, Alexa will take what you say and make available the parts of the phrase as arguments to the program as follows:

What you say	Parameter 1	parameter 2
Alexa, increase <program name> by <percent>	dimup	percent value
Alexa, decrease <program name> by <percent>	dimdown	percent value
Alexa, dim <program name>	dimdown	always 25
Alexa, brighten <program name>	dimup	always 25
Alexa, set <program name> to <percent>	dim	percent value

You can test the parameter value using the Compute-Test element within the program. For example:



HCA Tech Note 100



For more information about using Parameters in programs review the user guide programs chapter in the section titled *Parameterized Programs*.

##end##