



HCA Tech Note 200

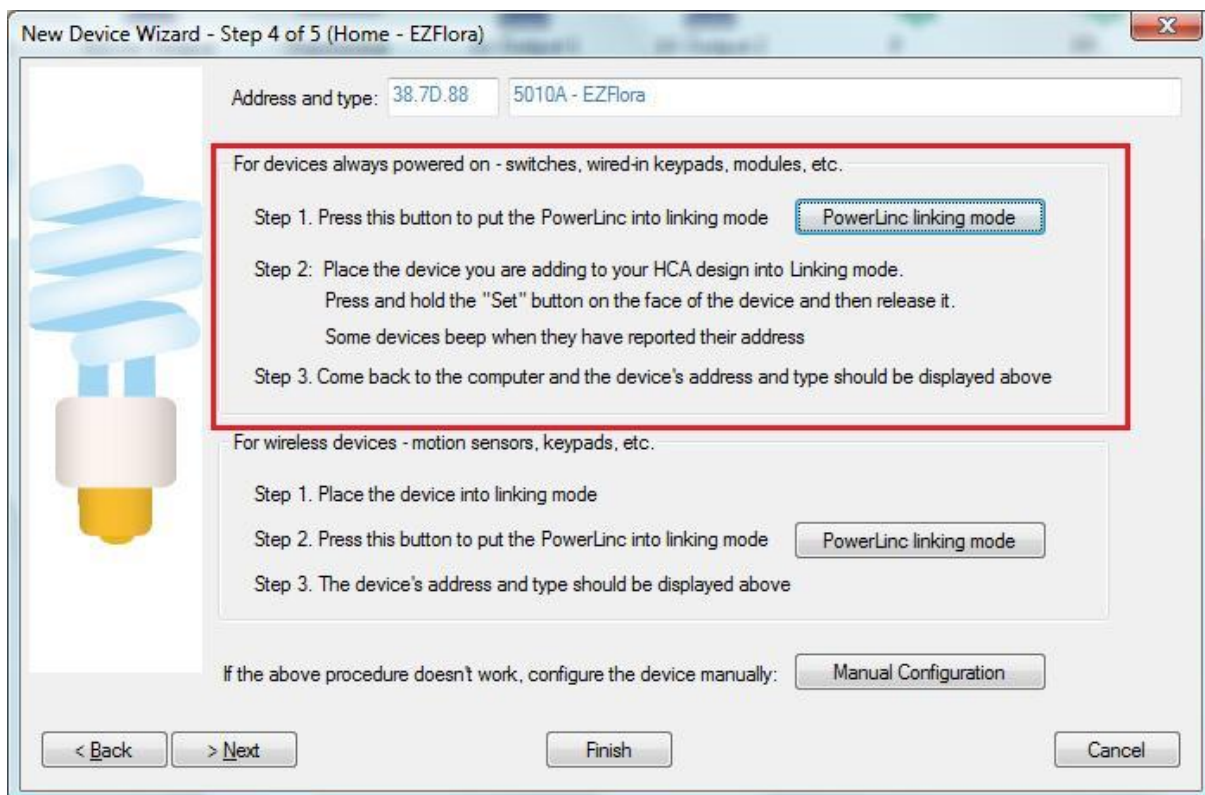
Working with the Insteon EZFlora 8-Zone Irrigation Controller

<http://www.smarthome.com/smartenit-insteon-ezflora-8-zone-sprinkler-controller.html>

The complexity of using the EZ-Flora in HCA is that there are eight independently controllable devices in one package. In HCA each device represents a single controllable unit. Because of this, when this type of device is added to your design, eight HCA devices are added.

Using the EZFlora with HCA starts by adding it to your design. You need to be able to access the "Set" button on it to establish a link to it. The set button is located on the side of the module next to the status LED.

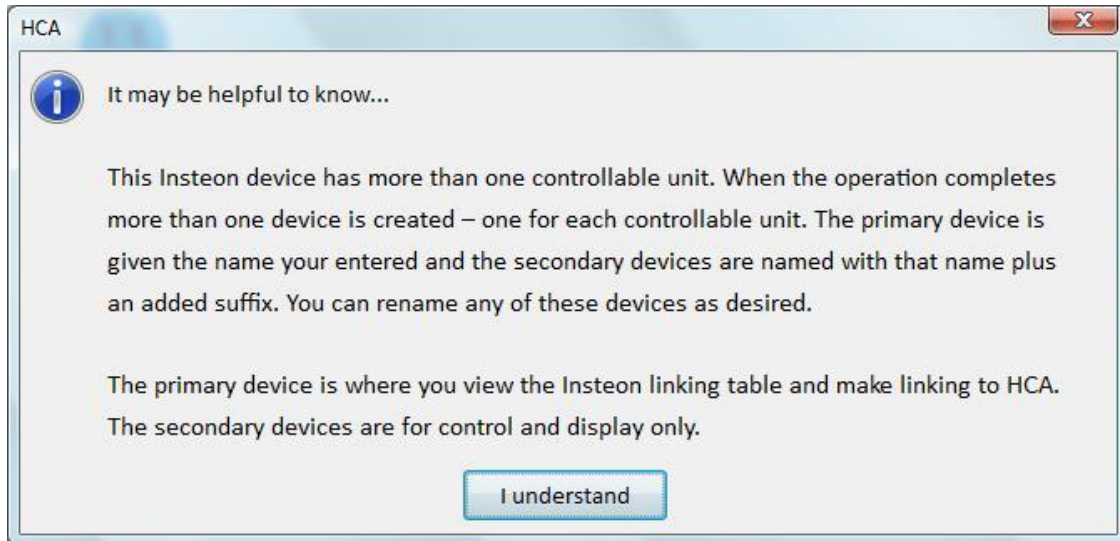
In the Add Wizard on step 3, choose "Insteon" as the manufacturer and then press the Next button. In step 4 press the dialog button to put the PowerLinc into linking mode and then press the set button on the EZFlora to complete the link.



After you complete the Add Wizard, this popup messages appears:



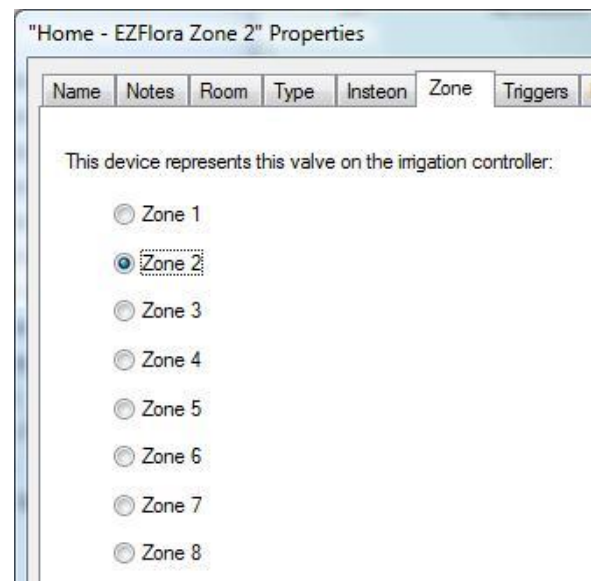
HCA Tech Note 200



Since the EZ-Flora has 8 relays, 8 HCA devices are created – one for each of the 8 zones. The device for zone 1 becomes the "primary" device and the other zone devices are "secondary". Any of the devices can be used in programs or schedules to control that zone.

When you open the properties of the primary device the "Insteon" and "Linking" tabs are available. When you open the properties of the secondary devices the Insteon tab directs you to the primary device and the linking tab is not seen.

If you ever need to change the zone the device represents, open the properties of the device and choose the "zone" tab:





HCA Tech Note 200

Each zone can be independently controlled. HCA works the same way as the device does -only one zone is active at a given time - and updates the other zone devices to show their state as appropriate.

Messages from controllers that are linked to the outputs are received and cause HCA to keep its state up to date as long as the linking table of the controller and the EZFlora are up to date.

You can also use the Visual Scene Editor (VSE) with the EZFlora. Using the VSE you can build scenes that are:

- Controlled by HCA to turn on or off a zone and other devices simultaneously
- Controlled by an Insteon controller (KeypadLinc, IO Module Input) that turns on or off a zone.