



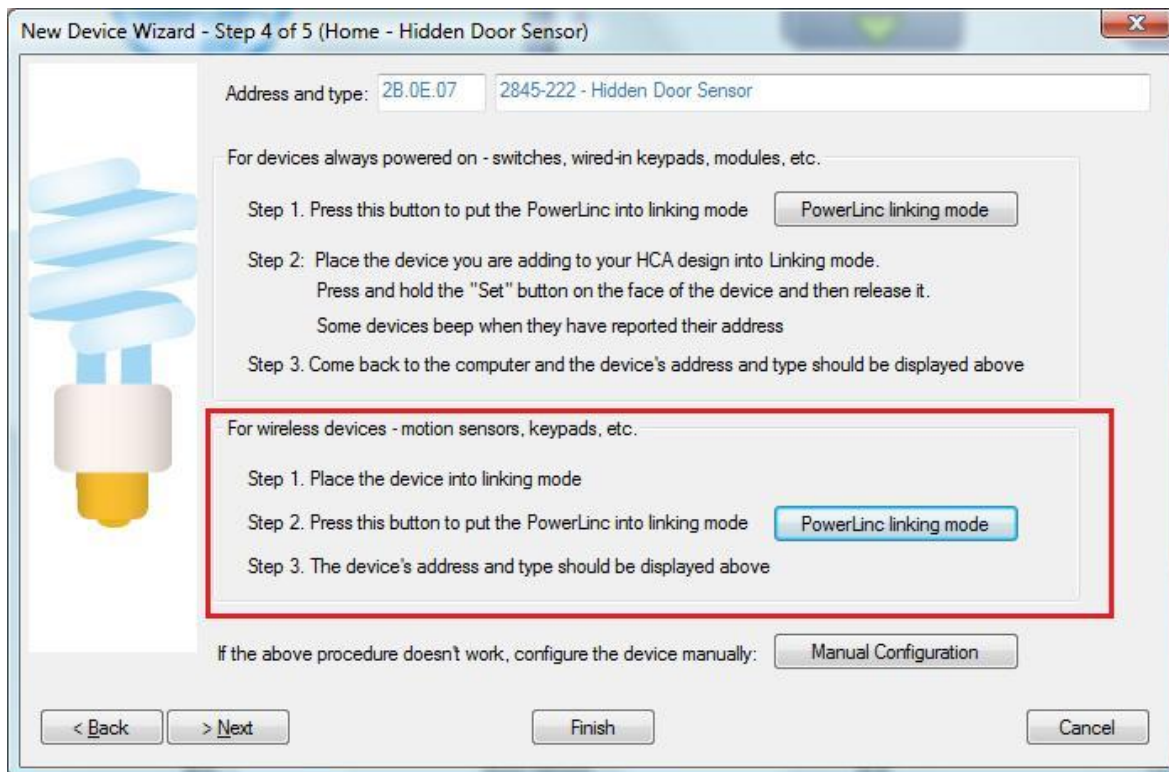
HCA Tech Note 203

Working with the Insteon Hidden Door Sensor

<http://www.smarthome.com/insteon-2845-222-hidden-door-sensor.html>

Using the Hidden Door Sensor with HCA starts by adding it to your design. You need to be able to access the "Set" button on it to establish a link to it. The Set button is on the side of the device – normally "hidden" inside the door jamb.

In the Add Wizard on step 3 choose "Insteon" as the manufacturer and then press the Next button. In step 4 before pressing the dialog button to put the PowerLinc into linking mode, place the device into linking mode by pressing and holding its set button until it enters linking mode. Then press the PowerLinc button in the dialog to complete the link.



Insteon devices send commands that HCA receives. These commands are things like On, Off, Fade Start, Fade Stop, Status, etc. The message, in addition to the command, contains what is called the "group number". A group number is just a method by which the message identifies the source of the command from the possible subunits of the device. For a keypad, the group numbers are used to identify which button pressed. For other devices, the group numbers identify a specific sub-unit. In the case of this device there are several different groups. You just have to know – using the table below – what group does what.



HCA Tech Note 203

When you create a trigger in HCA you specify the device, the group, and the command. When a message is received that matches all three of these then the trigger happens and the program starts.

The Hidden Door Sensor makes these transmissions:

Group 1: Open/Close action

Group 2: (not used)

Group 3: Low Battery

Group 4: Periodic notification so you know it is alive. Reports approximately once a day.

Before HCA can receive the groups 3 & 4 reports they first must be linked. Place the hidden door sensor into linking mode so that it is listening, and then on the linking tab press the group buttons to create the link. The linking button shows "HCA" if it is already linked.

Insteon Input → HCA Device initiates the linking and once complete the device sends commands that HCA can use as program triggers

When you link an Insteon input - like a keypad button - to a device, the device is controlled when the input transmits. In this same way, you can link an input to HCA. When the input transmits, HCA receives the Insteon message and you can use the receipt of the message as a trigger for a program.

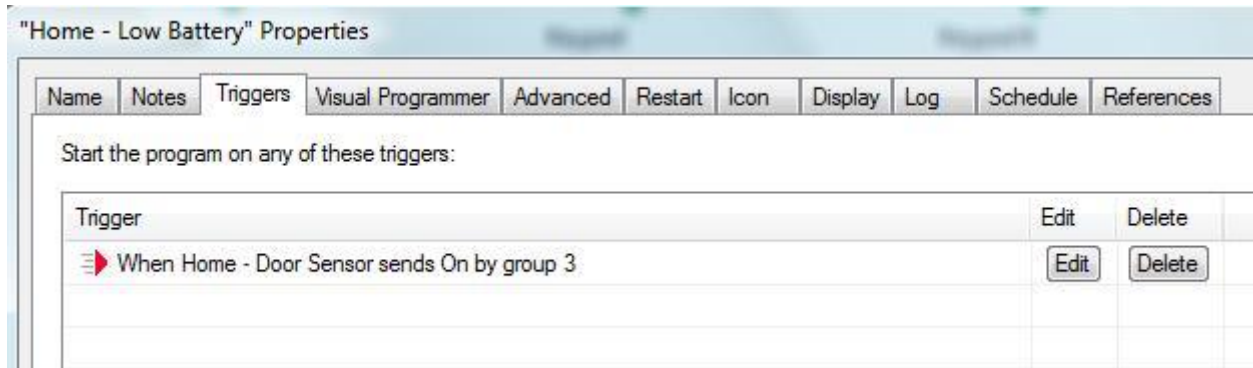
To link an input to HCA, press the button on the right you want to link and follow any directions

HCA
2
3
HCA

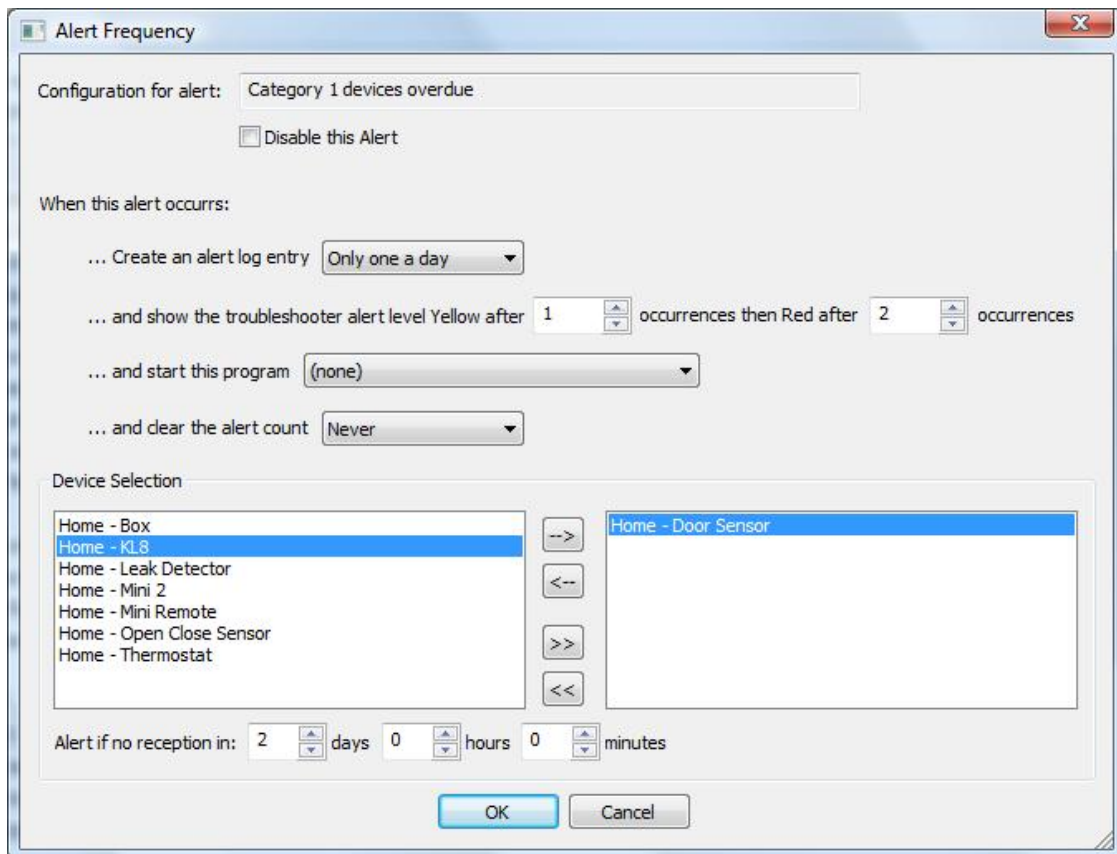
Once the linking is complete then you can create program triggers for the messages you want to handle. For example this program will trigger on the low battery message.



HCA Tech Note 203



You can configure the Overdue Device Alert to watch for the group 4 messages and raise an alert if the device isn't heard from over two days. Configuring the overdue time of two days handles the possibilities of a missed message.





HCA Tech Note 203

You can also use the Visual Scene Editor (VSE) with this sensor. Using the VSE you can build scenes that are controlled by the sensor and control Insteon receivers (switches, KeypadLinc LEDs, output devices). When using the HCA VSE, the programming pauses when the scene contains a wireless device to give you time to place it into linking mode so its receiver is on and can then receive the programming commands.